

Restaurant tables and chairs furniture by TRINITY manufacture

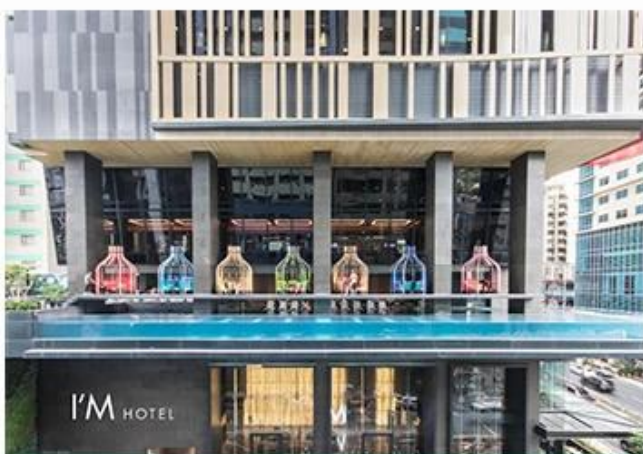
Restaurant Project case



COMMISSARY RESTAURANT, HONG KONG



HARDROCK HOTEL RESTAURANT MALDIVES



I'M HOTEL, MANILA RESTAURANT



Material

Solid timber: Manchurian ash, rubber wood, teak, black sandalwood, cherry, beech, white oak, black

walnut, poplar, pine, birch, etc. Being processed with strict drying, the water content of real wood is 8%

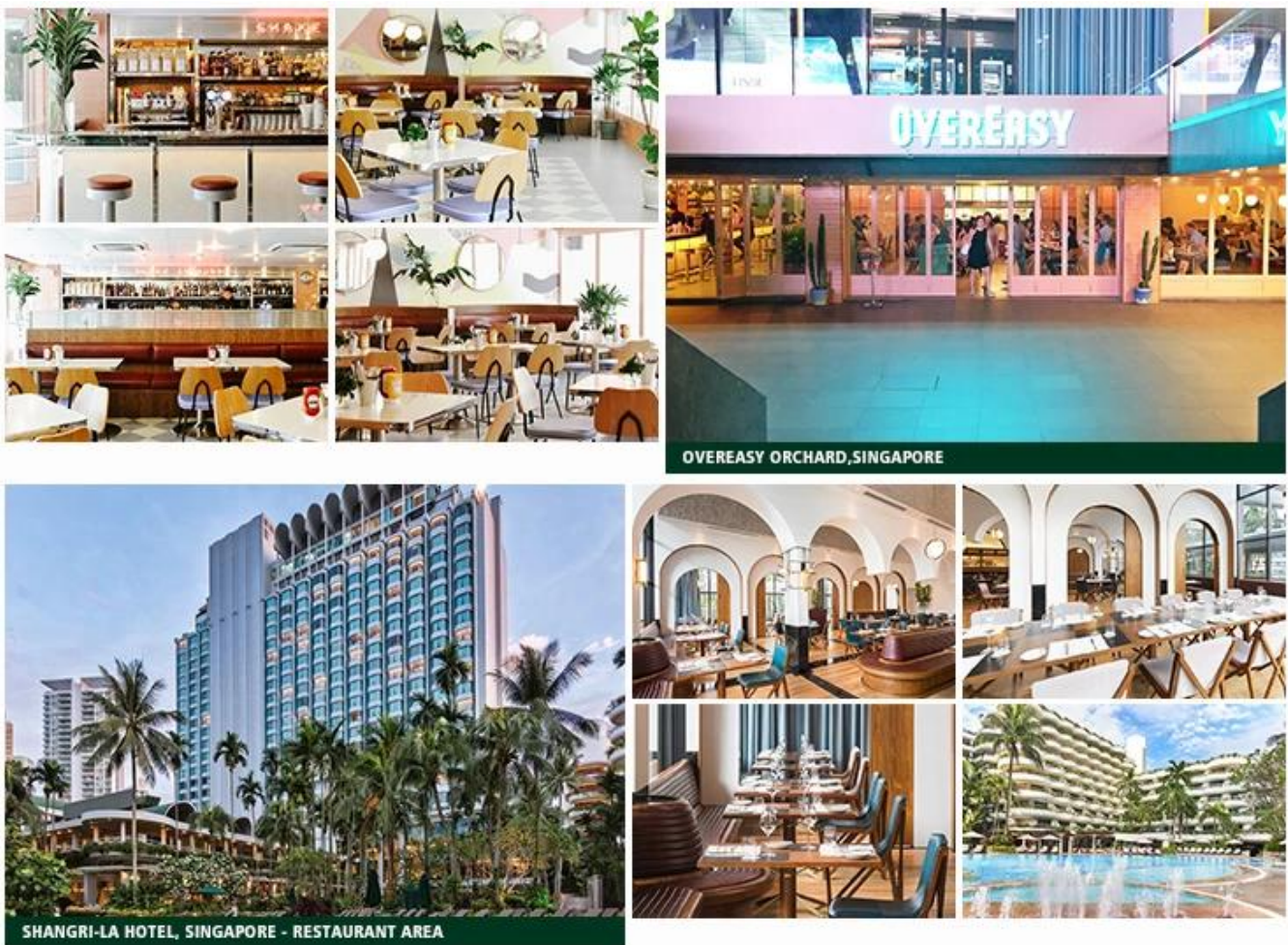
Plus material: Fabric: polyester fibre, cotton, cotton blended, chinlon velvet, 3M waterproof cloth, with Fire Retardant and Flame Retardancy. Leather: PU, PVC, genuine leather with Fire Retardant and Flame Retardancy.

Metal: Iron: Spray painting or electroplating process, stainless steel 201 or 304. Mirror or wire drawing finish.

Stone: Artificial stone and Natural marble (hard, acrylic, acid resist, corrosion resist, cold resist, high temperature resist and durable, its appearance and color can be maintained for more than 20 years. High quality material is the only thing we adopt in the production, finishing with exquisite workmanship, and strict inspection before shipment. Complete with the extreme standard export packaging for a safe & long journey of the products.)

Glass: 5mm to 10mm clear or colored toughened glass, polishing around the edge, completing with a small transparent disc to support the glass top.

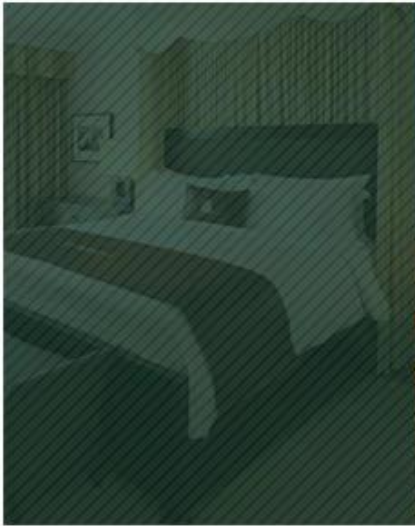
Painting: Use the semi-closed paint, open paint and gloss paint of China famous brand Dabao.



About Trinity

1.Since ZhongSen(TRINITY) established, until now has more than 20 years of history, it is a professional manufacturer for the star hotel furnitures, hotel lobby furnitures, villa furnitures, apartment furnitures and restaurant furnitures.From the preplanning, style positining, production designing, project implementation , and after sales service are all combined to provide of a full range of furniture supporting solutions for the customers.

ABOUT US



OUR SALES TEAM >



< OUR PRODUCTION TEAM

2.After years of precipitation, ZhongSen (TRINITY) has developed into a large scale custom hotel engineering furniture group, with a factory of 30000 square meters and more than 200 employees. The product system from the whole to the details, from a hotel lobby, restaurant, cafe, lounge, conference hall, outdoor, bedroom, living room, bathroom, door, covering the whole hotel furniture packaging. Exquisite technology, advanced production equipment, star hotel suite furniture production capacity of more than 1000 sets.

ABOUT US



OFFICE



SOLID WOOD WORKSHOP

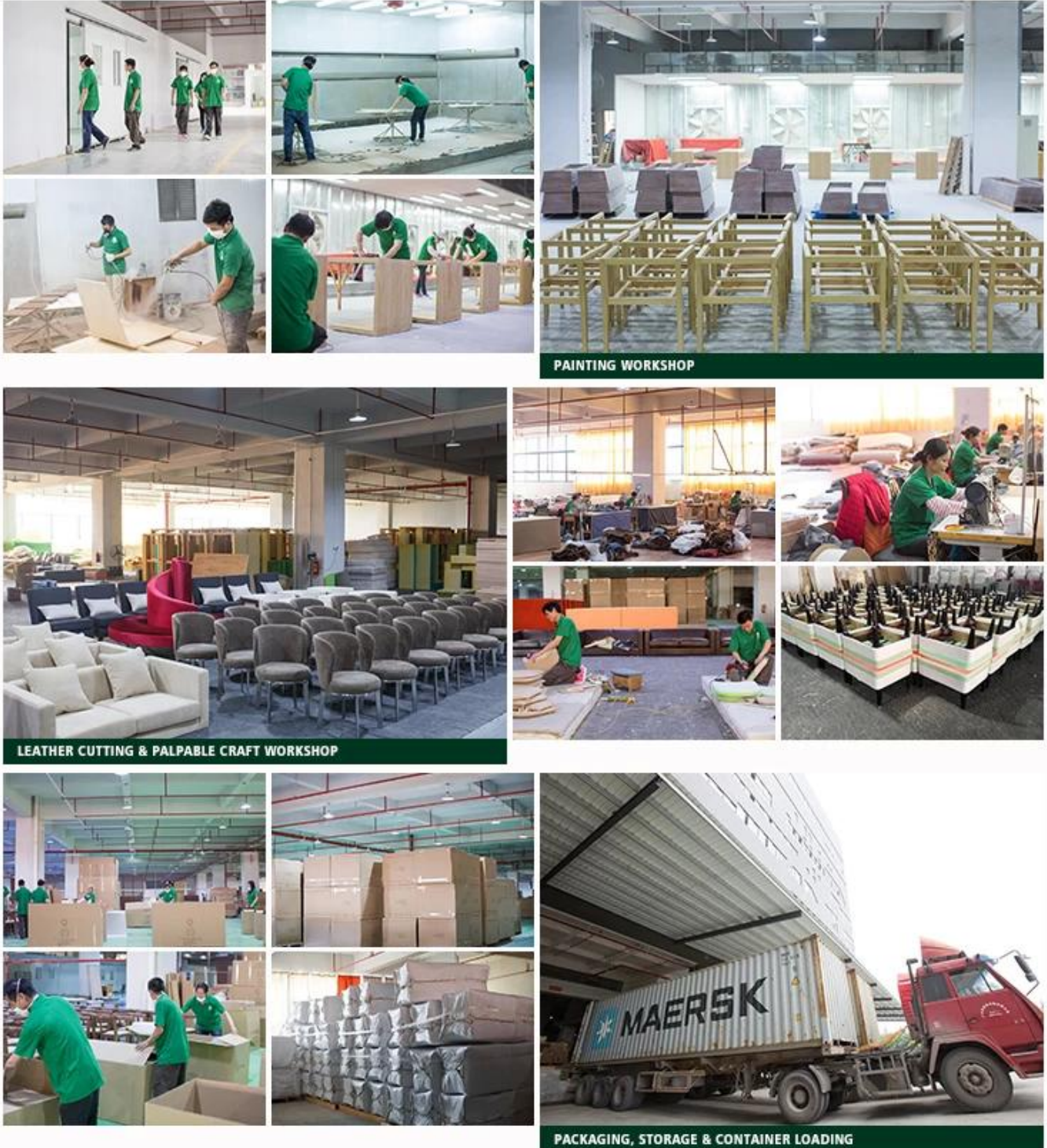


PLATE WORKSHOP



Production line

The procedure for all of the products must be strictly processed and passed inspection, make sure that every single minute detail perfectly meets customer's requirement.



Packaging

1. Cover the first layer with PE foam, put cardboard protector for the necessary corners. Wood furniture or hardware fittings wrapped with PE foam or sponge, and then use weaving bag finish with stitching or carton box with sealing tape for the outer packing.

2. Glass top and Marble top use Expandable Polystyrene to pack for the first step, put in the carton box and then use wood frame to secure protection is well.



PROFESSIONAL PACKING

- We offer an overall package to cater the exquisite home pieces of premium quality and craftsmanship



One-Stop Service

1. Come to us with your designs and detailed requirements, we will work on them or bring the vision you have in mind onto paper.

2. Be it stone, glass or resin, we will try our best to source for materials that match your specifications for the best prices.

3. We will produce mock-up pieces for your furniture designs and undergo a review session before approval for bulk production.

4. With our control over manufacturing and quality, we are able to ensure the quality of every single piece that comes out of our factory.

5. To save you the hassle of handling products from multiple sources, we offer our facilities as the consolidation point of storage and shipping. We ship to anywhere in the world.

6. Our job does not stop after delivery and installation. We will visit your site personally to ensure everything is to your satisfaction.

7. We believe the quality of our products, a warranty of 1 year is given to everything we manufacture.

8. We look forward to building trust and long-lasting relationships with every single client.

OUR CERTIFICATE ✓



OUR CUSTOMERS ✓



FAQ

1.Can you furnished my hotel with furniture decoration plan?

Yes,We will match your idea, match the style of the decoration you want, and all kinds of star hotel engineering cases for you to refer to and improve your idea.All the furniture sizes can be tailored to the actual space in your hotel.

2.Is there a showroom in the factory?

Yes, about 3000 square showrooms are in our factory. There are all kinds of furniture for your reference, such as lobby furniture, outdoor furniture, restaurant furniture, and more than 10 different decoration styles of hotel bedroom furniture and so on.

3.What is your minimum order quantity?

It is based on your furniture type, such as a restaurant chair at least 50 orders, the minimum quantity of furniture in the hotel room is 10 sets.

4.How long is your delivery time?

After we charge a deposit of 30%, the two sides confirm the drawings, and then produce the samples, and confirm that they are correct. The shipment will take 30-60 days.

5.What kind of payment terms do you offer?

We can provide all terms of payment,Such as T / T, L / C, trusteeship, and so on.