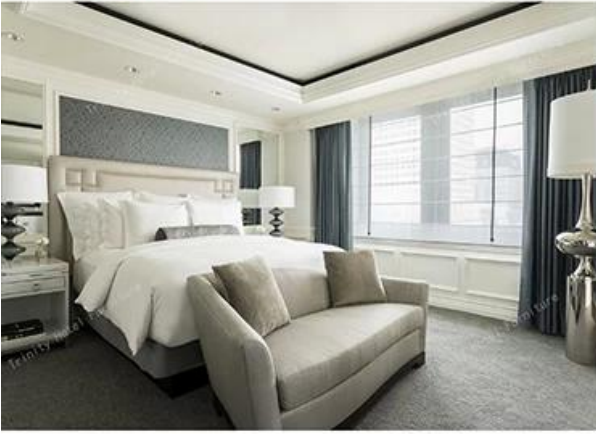


□□□□□□□□□□□□□□□□□□□□□□□□□□□□□□

TRINITY



TRINITY



TRINITY



TRINITY



TRINITY



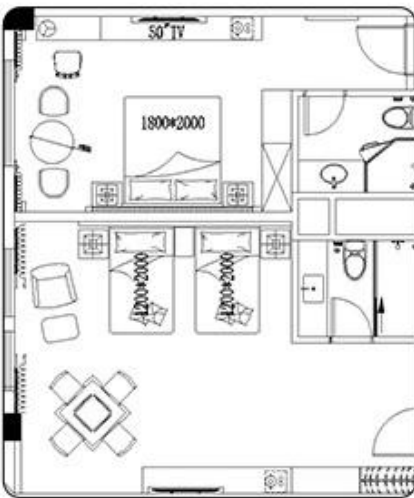
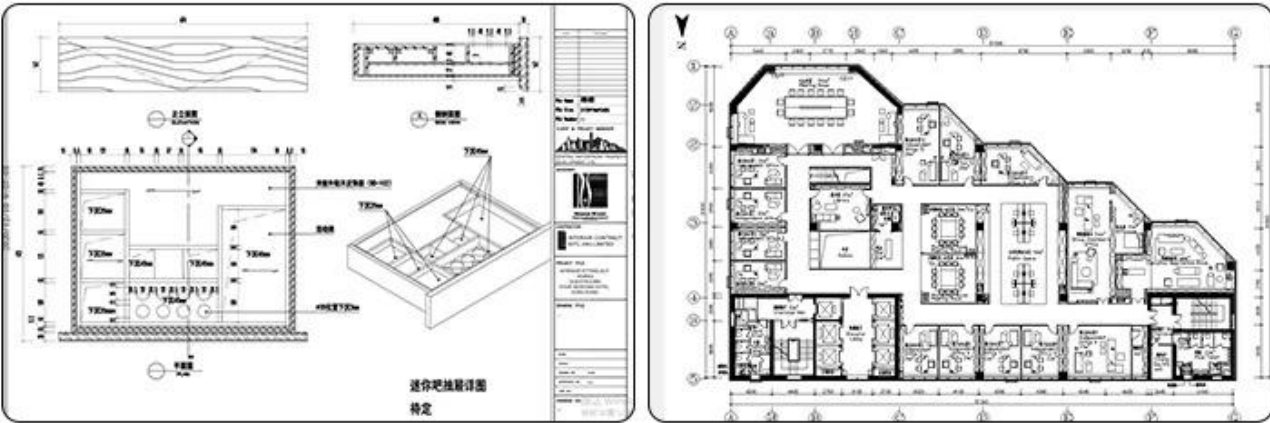
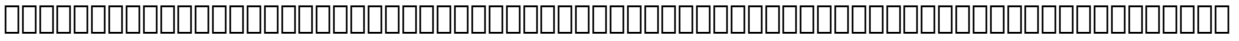
TRINITY













# ABOUT US



Factory Size:  
30, 000 SQM



Showroom:  
30, 000 SQM



Working staff:  
250 People.



OEM&ODM:  
Available

## Factory Scale

- ▶ **Established time:** 1998
- ▶ **Factory size:** 30000 SQM.
- ▶ **Showroom:** 3000 SQM.
- ▶ **Working staff:** 250 People.
- ▶ **Certificate:**
  - 1.ISO9000
  - 2.SGS.
  - 3.PEFC.
- ▶ **Service Advantage:**
  - 1.ODM & OEM.
  - 2.CAD interior design.
  - 3.Field measurement.
  - 4.On-site installation.
- ▶ **Project Scope:** Hotels,Resorts,Villas,Apartment and other collective spaces such as Restaurants and Public buildings.

## OUR TEAM



## OUR FACTORY







Four Season Hotel, Korea - 5 Star-Rated



Four Seasons Hotel, Singapore - 5 Star-Rated



Courtyard by Marriott Bengaluru Hebbal - 5 Star-Rated



HardRock Hotel, Maldives - 5 Star-Rated



Sofitel Fiji Resort & Spa - 5 Star-Rated



Treetops Executive Residences, Singapore - 5 Star-Rated



Oakwood Residence Kapil Hyderabad India - 5 Star-Rated



Four Seasons Hotel Kuwait at Burj Alshaya - 5 Star-Rated





## CUSTOMER GROUP PHOTO



## COOPERATIVE PARTNE



## CUSTOMER EVALUATION



